

Strategic Steam Energy Management in a Changing Economic Landscape

In today's rapidly evolving industrial environment, the pursuit of productivity is an essential. **STEAM LINK** is committed to unlocking all levels of operational efficiency by focusing on linking the steam energy systems effectively with the on-site processes. By optimising the process integration and effective management of steam energy investments, we enable factories and production centres to maintain, improve their competitive edge.

STEAM – Energy to Process – LINK

At the heart of our philosophy is the principle that steam energy should be utilised as a direct enabler of profit. The steam system is the very engine that powers your profit centre. By employing careful observation and customised strategies, **STEAM LINK** ensures optimal energy utilisation, reducing waste and maximising efficiency.

- **Site-Specific Solutions:** Each industrial site presents a unique operational landscape, from varying process loads to differing legacy infrastructure. **STEAM LINK** analyses these individual characteristics to close the gap between steam energy supply and process demand.

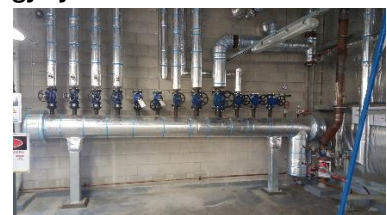
STEAM LINK designed, engineered steam energy system.



Steam Accumulator



Multi Boiler Installation



Main central steam manifold.

Ownership and Benefit

Many sites find themselves reliant on third-party suppliers and semi-automated systems, often resulting in diminished control over their energy system investment. **STEAM LINK** advocates for client-centric management, providing the tools and awareness needed so that the benefits of improved energy systems accrue directly to your business—not just to equipment vendors. By putting you the client in command, we safeguard the return on your investment and foster long-term sustainable operational health.

- **Effective Management:** Beyond technology, success in steam plant management hinges on human oversight. We work to empower our clients, ensuring that the ownership and control of energy systems remain with the operators, not solely with control equipment suppliers.

2025 Industrial Challenges

The industrial sector faces unprecedented hurdles as we move beyond 2025:

- **Shortage of Experienced Steam Plant Managers:** The COVID-19 pandemic has accelerated workforce attrition, leaving a gap in operational expertise. Recruiting and training new talent is both urgent and essential.
- **Material Costs and Supply Chain Disruptions:** Looming excessive USA trade tariffs expected to drive up the cost of critical materials, while global supply chains remain fragile. These factors threaten to erode margins and disrupt production schedules.

STEAM LINK®

Unit 100 / 193 South Pine Rd, Brendale Qld 4500

Call: 07 3881 1605 email: steam@steamlink.com.au Web: www.steamlink.com.au

© STEAM LINK 2025

ABN 42 609 810 663

25 Jul. 25

Page 1 of 2

STEAM LINK - Response to Uncertainty

To navigate this evolving landscape, **STEAM LINK** proposes a multi-pronged strategy:

- **Awareness Initiatives:** Onsite mentorship to rapidly upskill steam plant managers and operators. **STEAM LINK** - 'AWARENESS Program' Detailed explanation of onsite installed steam & condensate control components duty & function, and required process interaction, with detailed database.
- **Efficiency Audits:** Regular, site-specific audits that identify inefficiencies and recommend actionable improvements, focusing on both technology and operational practices.
- **Energy Cost Control:** Implementing smart monitoring and adaptive control systems that respond to process demand in real time, ensuring optimal energy use even with fluctuating costs.

Summary: Securing Your Profit Centre's Future

As industrial operations grapple with skilled labour shortages, volatile supply chains, and rising costs, **STEAM LINK** provides a pathway to resilience. Our mission is to place the ownership of steam energy management squarely in your hands, equipping you with the basic knowledge and systems to turn uncertainty into opportunity. By closing the gap between energy supply and process demand, we help transform your steam system from a support function into a true driver of profit and productivity.

Let **STEAM LINK** be your partner in building smarter, more efficient, and more resilient sustainable industrial operations for the challenges of today and tomorrow.

Contact

For further information or support, contact **STEAM LINK** through the following:

- **Email:** steam@steamlink.com.au
- **Web:** www.steamlink.com.au
- **Phone:** 07 3881 1605

Kindly leave your contact details, and **STEAM LINK** will respond within three business days.

Manfred Schneider

Director

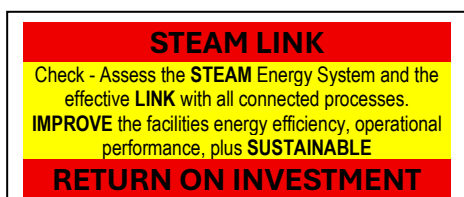
manfred@steamlink.com.au

Your Manufacturing / Process Facility

MANFRED

Concrete pipes- curing

Softwood – Kiln drying.



STEAM LINK®

Unit 100 / 193 South Pine Rd, Brendale Qld 4500

Call: 07 3881 1605 email: steam@steamlink.com.au Web: www.steamlink.com.au

© STEAM LINK 2025

ABN 42 609 810 663

25 Jul. 25

Page 2 of 2