

STEAM LINK

Advancing Sustainable Productivity

In 1998, Manfred Schneider laid the foundation for **STEAM LINK**, an enterprise dedicated to advancing the interaction between steam plant investments and the connected process technology. Recognising the growing complexity and costs associated with industrial steam energy systems, Manfred envisioned a steam plant support service that would place clients' needs at the centre, ensuring that capital investments in steam plant infrastructure were both cost-effective and seamlessly integrated with existing and emerging process technologies.

The 2025 Industrial Challenge

2025 presented the Australian industrial sector with unprecedented hurdles:

- **Shortage of Experienced Steam Plant Managers:** The COVID-19 pandemic has accelerated workforce attrition, leaving a gap in operational ability. Recruiting and training new talent is both urgent and essential.
- **Material Costs and Supply Chain Disruptions:** The pending excessive USA trade tariffs expected to affect economies driving up the cost of materials, while global supply chains are still fragile. These factors threaten to erode margins and disrupt production schedules.

Steam Link's Responses to Uncertainty

To navigate this evolving landscape, **STEAM LINK** proposes a multi-pronged strategy:

- **Awareness Initiatives:** Onsite mentorship to rapidly upskill steam plant operators. Detailed explanation of onsite installed steam & condensate control components duty & function, with detailed database.
- **Efficiency Audits:** Regular, site-specific audits that identify steam energy systems performance, process and operational inefficiencies and recommend actionable improvements, focusing on both technology and operational practices.
- **Operational Cost Control:** Implementing smart and adaptive control systems that respond to process needs in real time, ensuring best energy use even with fluctuating energy demand cycles, improving productivity, maintaining return on investment.
- **Return on Investment:** **STEAM LINK** advocates client-centric management, providing the knowledge and training needed so that the benefits of improved steam energy systems accrue directly to you, your business—not to create repeat business for specialist's steam & condensate components vendors. **STEAM LINK** putting you, the client in charge, we safeguard your return on investment and foster a sustainable future.

Conclusion

2025, as industries evolve and demands for efficiency and sustainability grow ever more pressing, **STEAM LINK** remains a trusted advisor and partner. By bridging the steam energy supply system cost effective with on-site process technology, **STEAM LINK** ensures that clients can manage not only present challenges but future opportunities as well.

For further information or support, contact **STEAM LINK** through the following:

- Email: steam@steamlink.com.au
- Web: www.steamlink.com.au
- Phone: 07 3881 1605

Kindly leave your contact details, and **STEAM LINK** will respond within three business days.

STEAM LINK®

Unit 100 / 193 South Pine Rd, Brendale Qld 4500

Call: 07 3881 1605 email: steam@steamlink.com.au Web: www.steamlink.com.au

© STEAM LINK 2025

ABN 42 609 810 663

Page 1 of 2

STEAM LINK

THE STEAM PLANT SUPPORT CENTRE



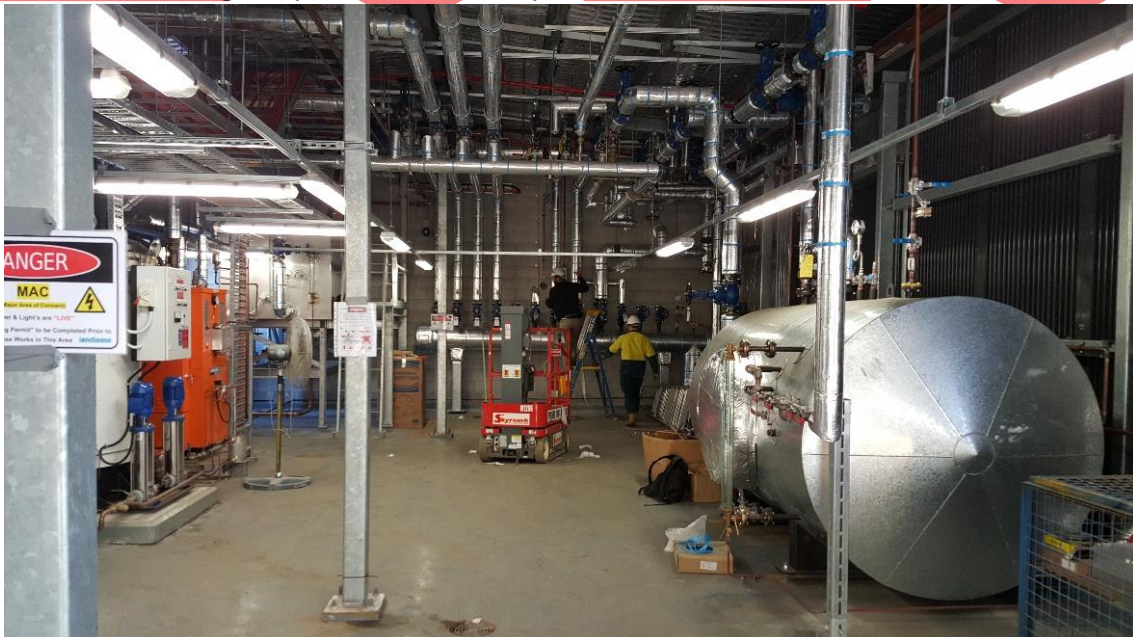
Manfred Schneider

Director

manfred@steamlink.com.au

HOSPITAL PROJECT

STEAM LINK designed plant room, multiple Boiler installation, Manifold, Accumulator



c/w feed water tank, steam pipes, control valves, steam meters installation

STEAM LINK®

Unit 100 / 193 South Pine Rd, Brendale Qld 4500

Call: 07 3881 1605 email: steam@steamlink.com.au Web: www.steamlink.com.au

© STEAM LINK 2025

ABN 42 609 810 663

Page 2 of 2